

First Position Notes on the First Two Strings

Write the letter name below each note,
as well as the number of the fret and string on which it is played.

C
1st Fret
2nd String

_____ Fret
_____ String

_____ Fret
_____ String

_____ Fret
_____ String

_____ Fret
_____ String

_____ Fret
_____ String

_____ Fret
_____ String

_____ Fret
_____ String

First Position Notes on the First Two Strings

Write the letter name below each note,
as well as the number of the fret and string on which it is played.



A musical staff in 4/4 time with a treble clef. It contains four quarter notes on the second line of the staff, which corresponds to the 2nd string of a guitar. The notes are positioned at the 1st, 2nd, 3rd, and 4th frets.

C
1st Fret
2nd String

_____ Fret
_____ String

_____ Fret
_____ String

_____ Fret
_____ String



A musical staff in 4/4 time with a treble clef. It contains four quarter notes on the first line of the staff, which corresponds to the 1st string of a guitar. The notes are positioned at the 1st, 2nd, 3rd, and 4th frets.

_____ Fret
_____ String

_____ Fret
_____ String

_____ Fret
_____ String

_____ Fret
_____ String

First Position Notes on the First Three Strings

Write the letter name below each note,
as well as the number of the fret and string on which it is played.

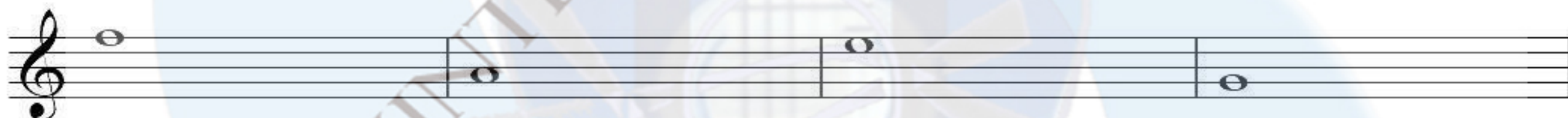


____ Fret
____ String

____ Fret
____ String

____ Fret
____ String

____ Fret
____ String



____ Fret
____ String

____ Fret
____ String

____ Fret
____ String

____ Fret
____ String

First Position Notes on the First Three Strings

Write the letter name below each note,
as well as the number of the fret and string on which it is played.



____ Fret
____ String

____ Fret
____ String

____ Fret
____ String

____ Fret
____ String



____ Fret
____ String

____ Fret
____ String

____ Fret
____ String

____ Fret
____ String

First Position Notes on the First Four Strings

Write the letter name below each note,
as well as the number of the fret and string on which it is played.



____ Fret
____ String

____ Fret
____ String

____ Fret
____ String

____ Fret
____ String



____ Fret
____ String

____ Fret
____ String

____ Fret
____ String

____ Fret
____ String

COPYRIGHT 2010
WWW.INTEGRATIVEGUITAR.COM

First Position Notes on the First Five Strings

Write the letter name below each note,
as well as the number of the fret and string on which it is played.



Four musical notes are shown on a single staff in 4/4 time. The notes are: a whole note on the 1st string (open), a whole note on the 2nd string (1st fret), a whole note on the 3rd string (2nd fret), and a whole note on the 4th string (3rd fret).

Below each note is a diagram of a guitar string with frets, labeled "Fret" and "String".

- 1st note: 1st fret, 1st String
- 2nd note: 1st fret, 2nd String
- 3rd note: 2nd fret, 3rd String
- 4th note: 3rd fret, 4th String



Four musical notes are shown on a single staff in 4/4 time. The notes are: a whole note on the 5th string (open), a whole note on the 4th string (1st fret), a whole note on the 3rd string (2nd fret), and a whole note on the 2nd string (3rd fret).

Below each note is a diagram of a guitar string with frets, labeled "Fret" and "String".

- 1st note: 0 fret, 5th String
- 2nd note: 1st fret, 4th String
- 3rd note: 2nd fret, 3rd String
- 4th note: 3rd fret, 2nd String

COPYRIGHT 2010
WWW.INTEGRATIVEGUITAR.COM

First Position Notes on the First Six Strings

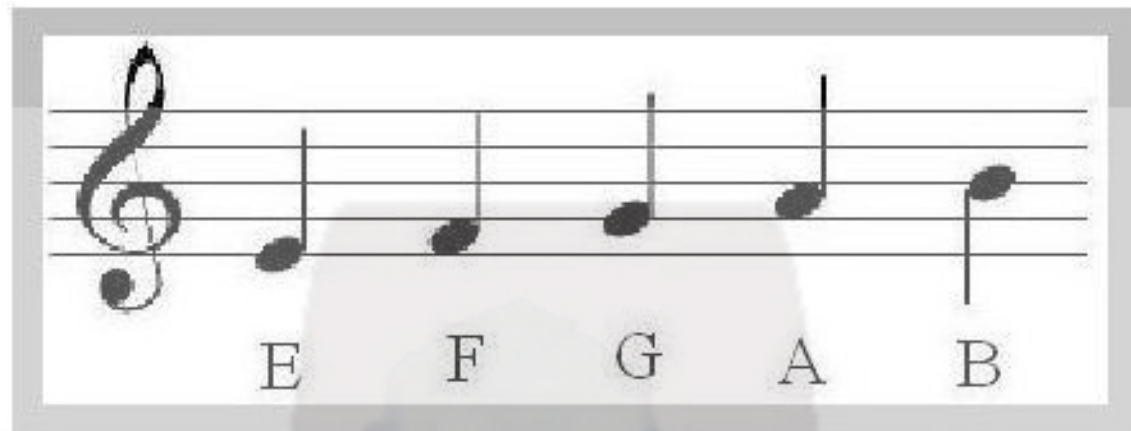
Write the letter name below each note,
as well as the number of the fret and string on which it is played.



A musical staff in 4/4 time with a treble clef. It contains four quarter notes: G2, G3, G4, and G5. Below the staff are four fret/string diagrams, each with three horizontal lines representing strings. The first diagram is for G2 (open string, 0 fret). The second is for G3 (1st fret, 2nd string). The third is for G4 (2nd fret, 3rd string). The fourth is for G5 (3rd fret, 4th string).



A musical staff in 4/4 time with a treble clef. It contains four quarter notes: G5, G4, G3, and G2. Below the staff are four fret/string diagrams, each with three horizontal lines representing strings. The first diagram is for G5 (3rd fret, 4th string). The second is for G4 (2nd fret, 3rd string). The third is for G3 (1st fret, 2nd string). The fourth is for G2 (open string, 0 fret).



Lines



Spaces



You can remember the names of the notes falling on the lines with:

Every Good Boy

The notes falling in the spaces between the lines spell:

FA

The note below the bottom line is D.



Below the staff, write L or S, depending on whether the note falls on a line or space. Then write the letter name of the note.



First Position Notes on the First Three Strings

Write the letter name below each note,
as well as the number of the fret and string on which it is played.



____ Fret
____ String

____ Fret
____ String

____ Fret
____ String

____ Fret
____ String



____ Fret
____ String

____ Fret
____ String

____ Fret
____ String

____ Fret
____ String

First Position Notes on the First String

Write the letter name below each note,
as well as the number of the fret and string on which it is played.



E
O Fret
1st String

____ Fret
____ String

____ Fret
____ String

____ Fret
____ String



____ Fret
____ String

____ Fret
____ String

____ Fret
____ String

____ Fret
____ String